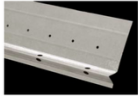




"Specialists in Expanded Metal Building Products"

FHA #7 FOUNDATION WEEP SCREED



#7 Foundation Weep Screed	Flange Size	Ctns/Pallet	Nominal Lbs/Ctn	Nominal Lbs/Pk
1/2"	3 1/2"	25	77	1925
5/8"	3 1/2"	25	82	2050
3/4"	3 1/2"	25	86	2150
7/8"	3 1/2"	25	90	2250
1"	3 1/2"	25	95	2375

10' Lengths - 25 pcs/ctn - 250' per ctn.

The #7 Foundation Weep Screed is used to provide a weep mechanism as part of the drainage system as required at the bottom of all framed walls; by all major building codes and the International Building Code in ASTM C1063. The larger holes in the ground flange are drainage holes as the entire surface of the sloped ground provides for drainage once the stucco has hydrated and shrinkage has occurred. The 3-1/2" nailing flange serves as a flashing when water resistant, breathable building paper or paper backed lath is installed over the flange.

ASTM C653 - Standard specification for steel sheet, zinc-coated (galvanized) or zinc-iron alloy coated (galvannealed) by the hot-dip process
 ASTM C947 - Standard specification for installation of interior lathing and furring
 ASTM C1047 - Standard specification for gypsum wallboard and gypsum veneer base accessories.
 ASTM C1063 - Standard specification for installation of lathing and furring for Portland cement-based plaster

NILES BUILDING PRODUCTS CO.

Company Headquarters
 1610 Hunter Street
 Niles, Oh 44446
 Phone: 800-323-3329
 Fax: 330-544-8868

www.nilesbldg.com



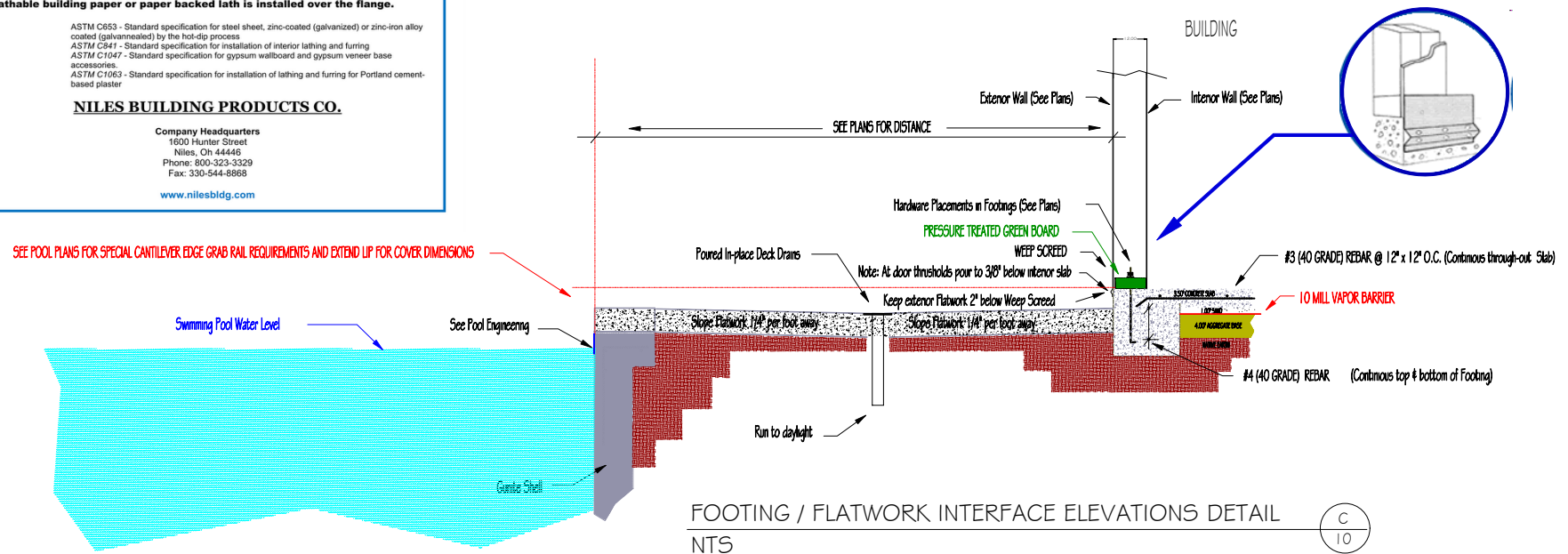
Earth Dynamics Poolscape Inc.

www.epoolscape.com

LICENSES & CERTIFICATIONS



Weep Screed Installation



FOOTING / FLATWORK INTERFACE ELEVATIONS DETAIL
 NTS



Only by a signed stamp by the Licensee do these plans, drawings and information have authority for use. Any persons using these without the expressed authorization will be in violation of the U.S. & International Copyright Laws